

Presentation to Thomasville City School District

October 6th 2020



THE ABC SCIENCE
COLLABORATIVE

Learning | Informed Decision-Making | Research

The information presented here is the most up-to-date, data-driven and evidence-based science to help school districts make important decisions regarding face-to-face instruction. Duke University and its partners will not make decisions nor will they advise specific action.

Updates

- Updates: partnership with Duke, UNC, 50+ school districts
- Leadership Focus - Superintendents
 - Expertise to look at national, state, and local epidemiology; insight into current research (therapies, vaccines, face coverings, outdoor instruction, transmission in HS vs elementary students, etc.)
- School Staff and Family Focus
 - Provide the data in a format that is clear and direct, with best practices that can be implemented in a return to face-to-face educational learning environment.
 - Format: webinars (weekly initially), newsletter content and a public facing website
 - First of these occurred; videos to website this month



1. COVID-19 in an Overnight Camp, Georgia

- Beginning: June 17 – 20
 - Orientation for 138 trainees & 120 staff members (median age 17; range 14 – 59 years)
 - Limited cloth mask compliance
 - Negative test ≤ 12 days before arriving
- Later: June 21 – 27
 - 363 campers joined (age 6-19 years)
 - Indoor, outdoor, vigorous singing and cheering
 - No mask for kids
 - June 23: Teenage staff member has symptoms and positive

COVID-19 in an Overnight Camp, Georgia

Characteristic	Number	No. positive	Attack rate %
Total	597	260	44
Sex			
Male	267	123	46
Female	330	137	42
Age			
6-10	100	51	51
11-17	409	180	44
18-21	81	27	33
22-59	7	2	29
Attendees			
Trainee	134	26	19
Staff	117	66	56
Camper	346	168	49
Cabin size			
Small (<4)	13	5	38
Medium	75	29	39
Large (>13)	375	200	53

COVID-19 in an Overnight Camp, Georgia

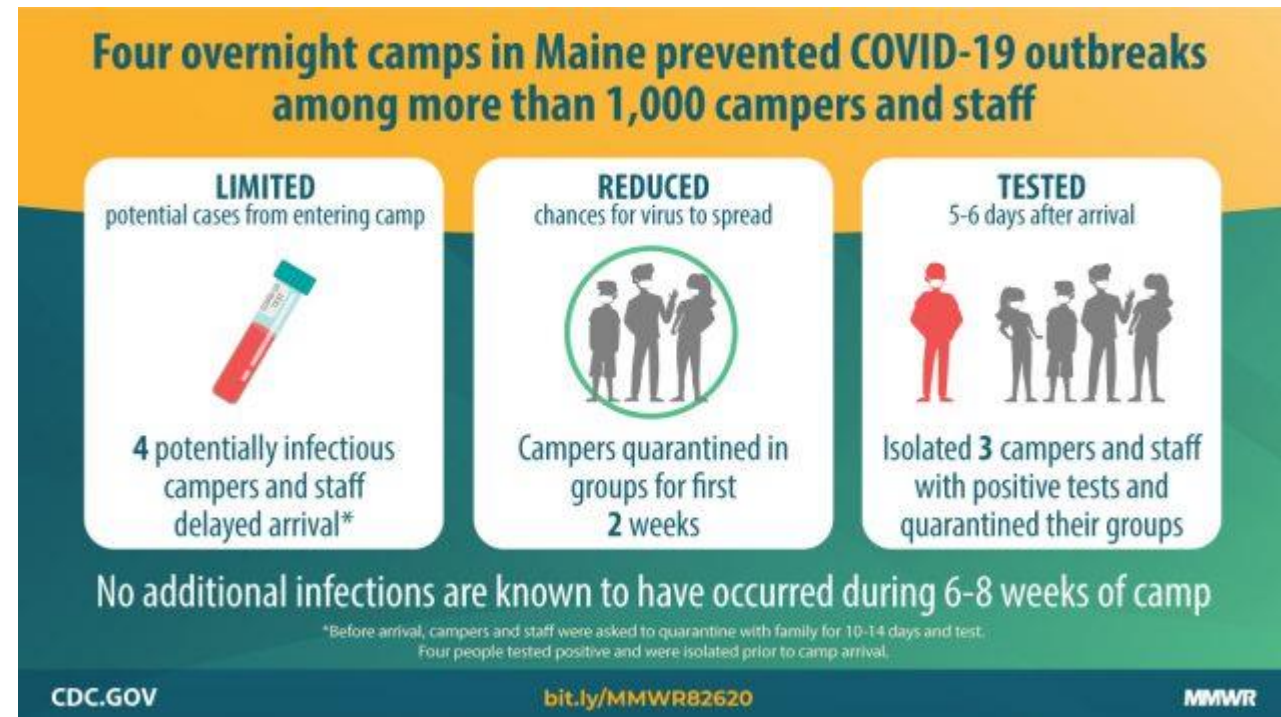
- Key points
 - Masks are important. Kids should wear masks
 - Most transmission occurred from staff → campers
 - Negative test ≤12 days should not give reassurance
 - Increased time at camp increased risk of infection

Managed well

- MMWR about safe overnight camps in Maine:
https://www.cdc.gov/mmwr/volumes/69/wr/mm6935e1.htm?s_cid=mm6935e1_w
- Contrasts
 - Tested at the start
 - Masks
 - Cohorts
 - Distancing
 - No additional infections

Summary

Four Maine overnight camps with 1,022 attendees from 41 states implemented a multilayered prevention strategy that was successful in identifying and isolating asymptomatic COVID-19 cases and preventing secondary transmission.



Metrics vs Plan and Risk/Benefit

- After school care experience
- Camp experiences locally, southeastern, and northeastern
- Child care experience NYC; Utah
- University experience
 - Davidson, Duke, Norwich University, and others
 - Alabama and UIUC
- Yadkin County Schools, Iredell-Statesville Schools

- Key elements: masking, population density, hand hygiene
- Metrics as a small part of the decision
- Risk/Benefit rather than no-risk



Project Aims

Learning

Share existing guidance about COVID-19 from national, state, and local health departments with school administrators, educators, and staff.

Informed Decision Making

Present and interpret data to guide school administrators through it to help inform their decision making.

Research

Partner with schools, educators, and the community to advance COVID-19 research and improve outcomes for children.

"This program is about today and tomorrow. We can take action that helps our school systems and their communities today, while learning how we can prepare for future pandemics"

Kanecla Zimmerman
MD, MPH,
Mother of two



Welcome to the ABC Science Collaborative

Since the beginning of the COVID-19 pandemic, our nation's school systems have faced unprecedented challenges. One of the most pressing challenges is deciding if children should return to school in person and, if so, how to do it safely and responsibly.

The ABC Science Collaborative is a program that pairs scientists and physicians with school and community leaders to help understand the most current and relevant information about COVID-19. The program helps school leaders make informed decisions about returning to school using data from their own communities. The ultimate goal of the program is to keep teachers, children, and their local communities healthy and safe.

Participating Schools



Chapel Hill-Carrboro City Schools



Durham Public Schools



Orange County Schools



Wake County Public School System



Program leadership team

COVID-related research experience, sponsored by NIH, and led by the team
For each project, a team member is the National Principal Investigator (PI)

1. National Study of Neonates exposed to COVID: a population-based study of 100,000 infants
2. PK-PD modeling of therapeutics used in children and adults for COVID
3. Multi-center study of the use of 10 antivirals and immune modulating agents in children with COVID
4. Data Safety Monitoring Board Chair for 2 randomized trials of anti-viral treatments for COVID in adults
5. Central Data Safety Monitoring Board resource and support program for COVID trials in adults
6. Coordinating center and clinical pharmacology for a blinded, multi-national master protocol in adults with COVID
7. Emergency consultative services for clinical trials design and recruitment across the life-span
8. MIS-C in children, a multi-center epidemiologic study

Additional expertise

- Holistic approach to staff and children: e.g., adult and pediatric mental health; adult infectious disease
- Other: environment, engineering, etc.



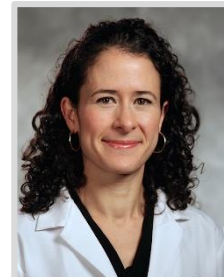
Kanecia Zimmerman, MD
Co-chair
Associate Professor,
Critical Care
2 children, Durham



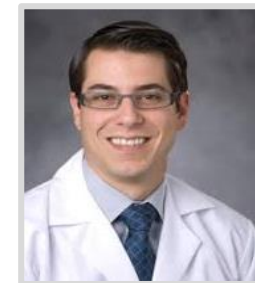
Danny Benjamin, MD, PhD
Co-chair
Distinguished Professor,
Epidemiology Therapeutics
4 children, CHCCS/college



Ibukun Akinboyo, MD
Assistant Professor,
Infectious Disease
No school-aged children



Gabriela Maradiaga Panayotti, MD
Assistant Professor,
Primary Care, Latinx
advocacy
2 children, Durham



Micky Cohen-Wolkoweiz, MD, PhD
Distinguished Professor,
Infectious Disease
2 children, Durham

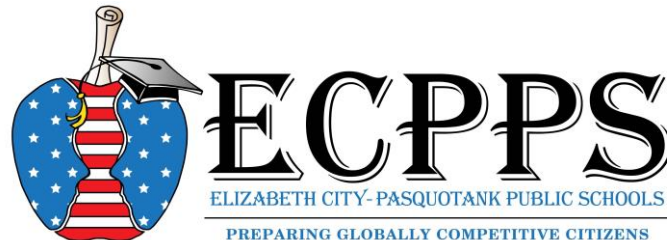
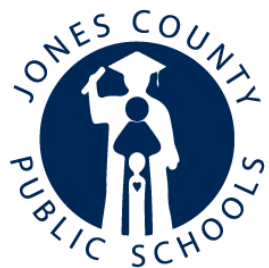


David Weber, MD, MPH
Assistant Chief Medical Officer
UNC Health Care



THE ABC SCIENCE
COLLABORATIVE

Districts with MOUs



Thank you.

Danny Benjamin Jr, MD, PhD
danny.benjamin@duke.edu



THE ABC SCIENCE
COLLABORATIVE

Learning | Informed Decision-Making | Research